

# **WELCOME to LIGA 2010 WORLD HOMEOPATHIC CONGRESS**

**MAY 18-22. 2010  
REDONDO BEACH  
CALIFORNIA**



**The Boenninghausen Method - Secure Remedy Choice in Severe Diseases**

**Dr. med. Carl Rudolf Klinkenberg Germany**

# Four ways of applying Boenninghausen's method

- Case 1      Clear modalities and sensations
- Case 2      Uncharacteristic symptoms
- Case 3      Clear main symptom
- Case 4      Complicated case

# **Case 1 Strong modalities and sensations**

**Mrs. D., 43 years Exacerbation of MS Feb. 2010**

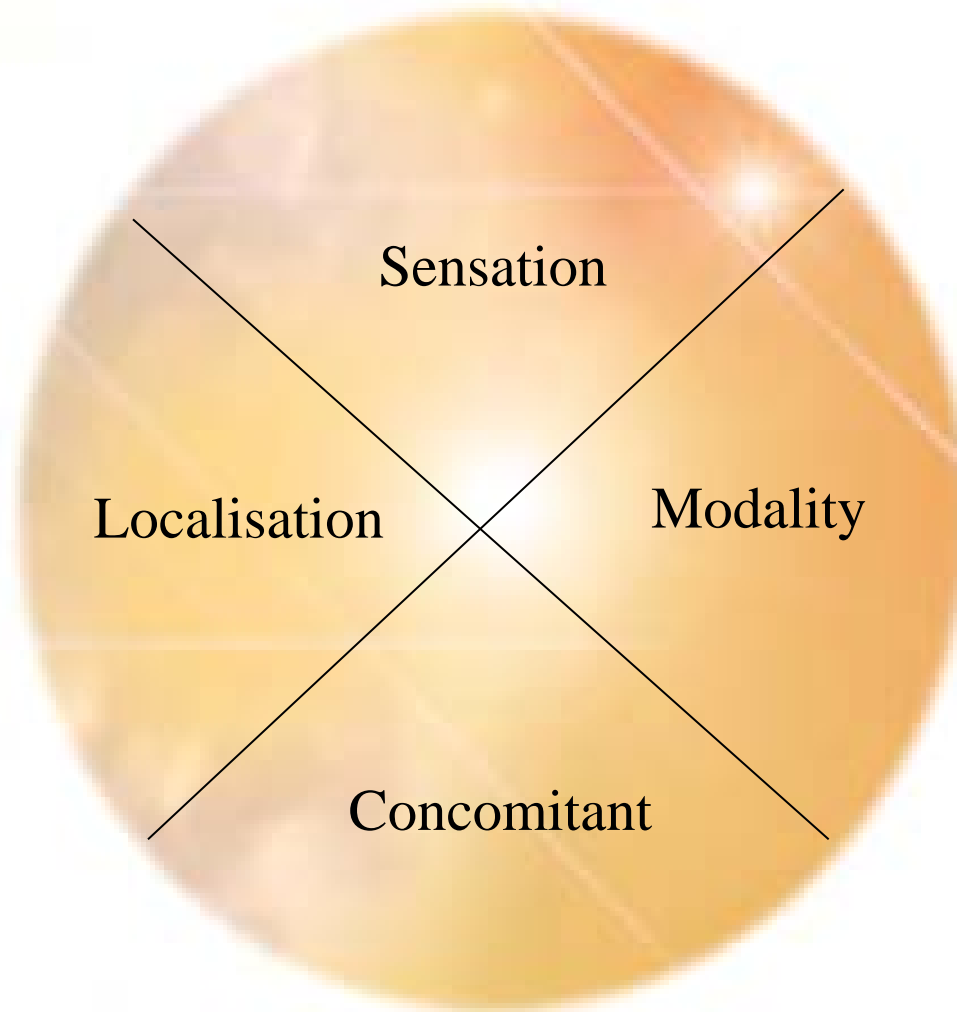
**(Photo  
Removed)**

# Case 1 Strong modalities and sensations

## Mrs. D., 43 years Exacerbation of multiple sclerosis

- Nervous, internally agitated
- Rush of thoughts
- Tiredness
- Vertigo, nausea < morning
- Blocked nose, yellow discharge
- Stitching in various parts
- < change of weather
- Stitching-biting, right upper arm
- Burning: upper arm, costal arch
- Pulsating: temples
- Tingling: head, hands, legs
- < exertion, > rest, > evening, < morning

# Complete symptom



# Stitching pain in the upper arm worse from motion

## **Kent's repertory**

Extremities - pain - stitching - upper arm - motion aggr.

## **Bönninghausen's Pocket Book**

Body parts - upper arm

Sensations - stitching

Aggravation - motion

# Case 1 Strong modalities and sensations

## Mrs. D., 43 years Exacerbation of multiple sclerosis

- Nervous, internally agitated
- Rush of thoughts
- Tiredness
- Vertigo, nausea < morning
- Stitching in various parts
- < change of weather
- Stitching-biting, right upper arm
- Burning: upper arm, costal arch
- Pulsating: temples
- Tingling: head, hands, legs
- < exertion, > rest, > evening, < morning
- Blocked nose, yellow discharge

# Case 1 Strong modalities and sensations


## Mrs. D., 43 years Exacerbation of multiple sclerosis

- Nervous, **internally agitated**
- Rush of thoughts
- Tiredness
- Vertigo, nausea < morning
- **Stitching** in various parts
- < **change of weather**
- **Stitching-biting**, right upper arm
- **Burning**: upper arm, costal arch
- Pulsating: temples
- Tingling: head, hands, legs
- < exertion, > **rest**, > evening, < **morning**
- Blocked nose, **yellow discharge**



# Case 1 Strong modalities and sensations

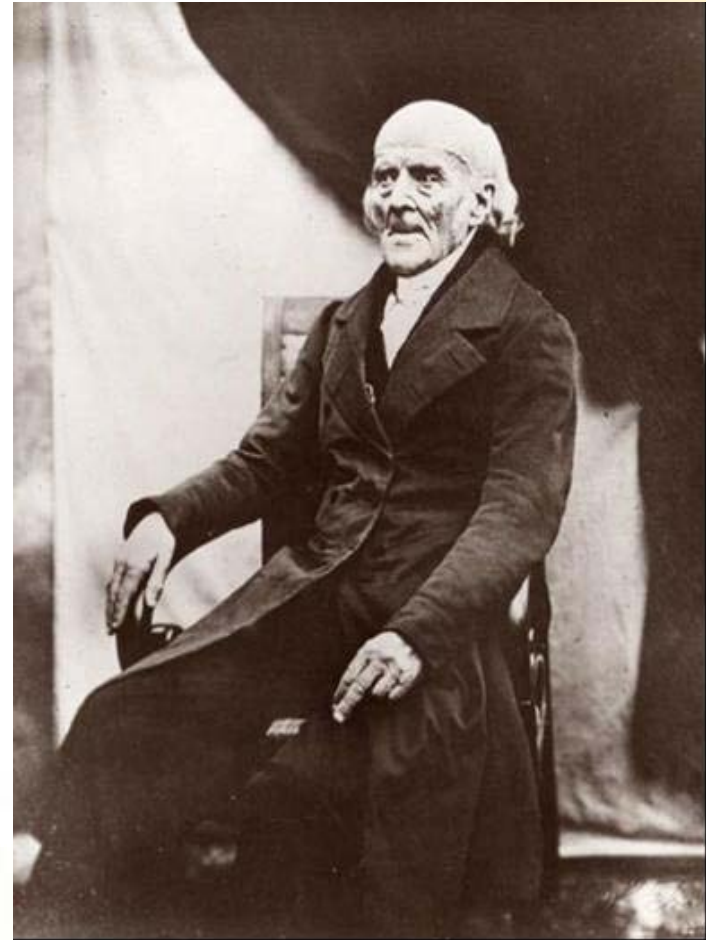
Mrs. D., 43 years Exacerbation of multiple sclerosis

	Phos. 	Bry.	Nux-v.	Rhus.	Sulph.	Calc.	Merc.	Sep.	Staph.	Bell.
<b>Number of matches</b>	8	7	7	6	8	7	7	7	6	7
<b>Sum total of grades</b>	25	21	20	20	19	19	18	18	18	17
<b>Polarity differences</b>	2	3	4	-3	0	1	2	-2	2	3
<b>Stitching external part</b>	3	4	2	4	4	4	4	3	4	4
<b>Burning external parts</b>	4	4	4	4	4	2	3	3	3	2
<b>Biting pain</b>	1	2	4	3	4	2	3	3	3	2
<b>&lt; morning</b>	4	2	4	4	2	4	2	3	3	2
<b>&gt; rest, when at</b>	3	4	4	1	1	2	3	1	3	4
<b>&lt; rest, when at (P)</b>	1	1		4	1	1	1	3	1	1
<b>&lt; change of weather</b>	4	3	1	4	2	2	2	1		
<b>Coryza, discharge, yellow</b>	3	2	1		1	3	1	4	2	1
<b>Mind, excitement</b>	3				1					2

# Samuel Hahnemann, Chronic diseases, 1835

„In cases, where the physician is certain as to the homoeopathic specific to be used, the first attenuated dose may also be dissolved in about 8 loths water (4½ ounces, a/n) by stirring it, and one-third may be drunk at once, and the second and third portions on the following days ... Thereby the remedy seeing to take a deeper hold on the organism and hasten the restoration ...”

S. Hahnemann, Chronic diseases, 1835, German edition, p. 157



# **Case 1 Strong modalities and sensations**

**Mrs. D., 43 years Exacerbation of multiple sclerosis**

**(Photo  
Removed)**

# Clemens Maria von Boenninghausen (1785 - 1864)

“...Baron von Boenninghausen has internalised my homoeopathic teachings to such a degree that ... if I myself were ill and could not help myself I would not entrust myself to any other doctor in the world but him.”

Testimony of S. Hahnemann, Köthen Sept. 1, 1833



## **Case 2 Uncharacteristic symptoms, defective illness**

**Sophia, 6 months**

**13<sup>th</sup> June 2001**

**(Photo  
Removed)**

## Case 2 Uncharacteristic symptoms, defective illness

### Sophia, 6 months Angiomatous tumour

15.03.01 **Five-fold vaccination No. 1**

1<sup>st</sup> week Swelling of the cheek and under the tongue

2<sup>nd</sup> week Eczema on the cheek

24.04.01 **Five-fold vaccination No. 2**

26.04.01 Paronychia on both sides

27.04.01 Tumour on the cheek and above the auricle (3 x 1 cm)  
Swelling of the submandibular lymphatic node (3 x 1,5 cm)  
Tumour of the lingual gland

# Georg Heinrich Gottlieb Jahr (1800 - 1875)






“... The pathognomic-diagnostic signs are ... often of extremely variable value for us in all cases, where due to a lack of characteristic signs we have to **at least keep to some signs** ...The pathognomic-diagnostic signs therefore **more or less reduce the circle of those remedies** among which the choice remains uncertain, and for the clinic, this is truly of very great use.”

G.H.G. Jahr: Lehren und Grundsätze, 1856, p. 297

# Case 2 Uncharacteristic symptoms, defective illness

Sophia, 6 months      Angiomatous tumour

	Calc. 	Rhus.	Sil. 	Staph.	Bell.	Merc.	Nit-ac.	Sep.	Lyc.	Sulph.	Cham.	Con.	Phos.	Thuja 
Number of matches	9	8	9	9	8	9	9	9	8	8	8	8	8	8
Sum total of grades	28	28	27	27	27	26	26	24	24	23	21	21	20	20
Polarity differences	6	5	4	3	5	4	5	2	6	3	2	1	6	0
Glands, swelling (tumor)	3	4	3	2	4	4	4	2	4	4	3	4	4	3
Ext. throat lymph nodes	3	4	3	4	4	4	3	2	2	2	3	3	2	2
Ears, parotic gland	3	4	3	2	4	4	2	2	1	3	4	4	2	1
Face, right	4	3	3	3	4	3	3	2	4	2	1	2	3	2
Face, left (P)	2	2	1	1	2	2	1	3	1	3	1	3	1	2
Face eruptions, cheek	3	4	3	4	3	1	1	3			2	2	2	1
Skin, tetters, itching	2	4	3	3	1	3	3	4	2	3		2	1	3
< afternoon	2	1	3	3	4	1	3	1	4	1	1	2	2	4
< water and washing	4	4	2	2	3	3	3	4	3	4	3	2	4*	
> Water and washing (P)				1				1			1			
< vaccination (smallpox)	4		4	4		3	4	4	4	4	4			4
Mouth, Glands, salivary	1	1	1			2			1			1		1
Tongue, swelling under	3			1	3	2	3							3
Skin, < getting wet	4	4	1	1	2	4	4	4	1	4	2	1	4	



## **Case 2 Uncharacteristic symptoms, defective illness**

**Sophia, 6 months    Angiomatous tumour**

**(Photo  
Removed)**

# Repertories that Kent integrated

<b>Author</b>	<b>Repertory</b>	<b>Grade</b>
Jahr, G.H.G.	1838 Manual of Homoeopathic Medicine	4
Bönninghausen, C.v.	1846 Therapeutic Pocket Book	5
Lippe, C.	1879 Rep. to the More Characteristic Symptoms	2
Allen, T.F.	1880 The General Symptom Register	3
Lee, E.	1889 Repertory of the Characteristic Symptoms	3
<u>Knerr, C.B.</u>	<u>1896 Repertory of Herings Guiding Symptoms</u>	<u>4</u>
Kent, J.T.	1897 Repertory of the Materia medica	3

## **Case 3 Clear main symptom**

**Mr. B., 41 years Cancer of the testes 18th Oct. 2008**

**(Photo  
Removed)**

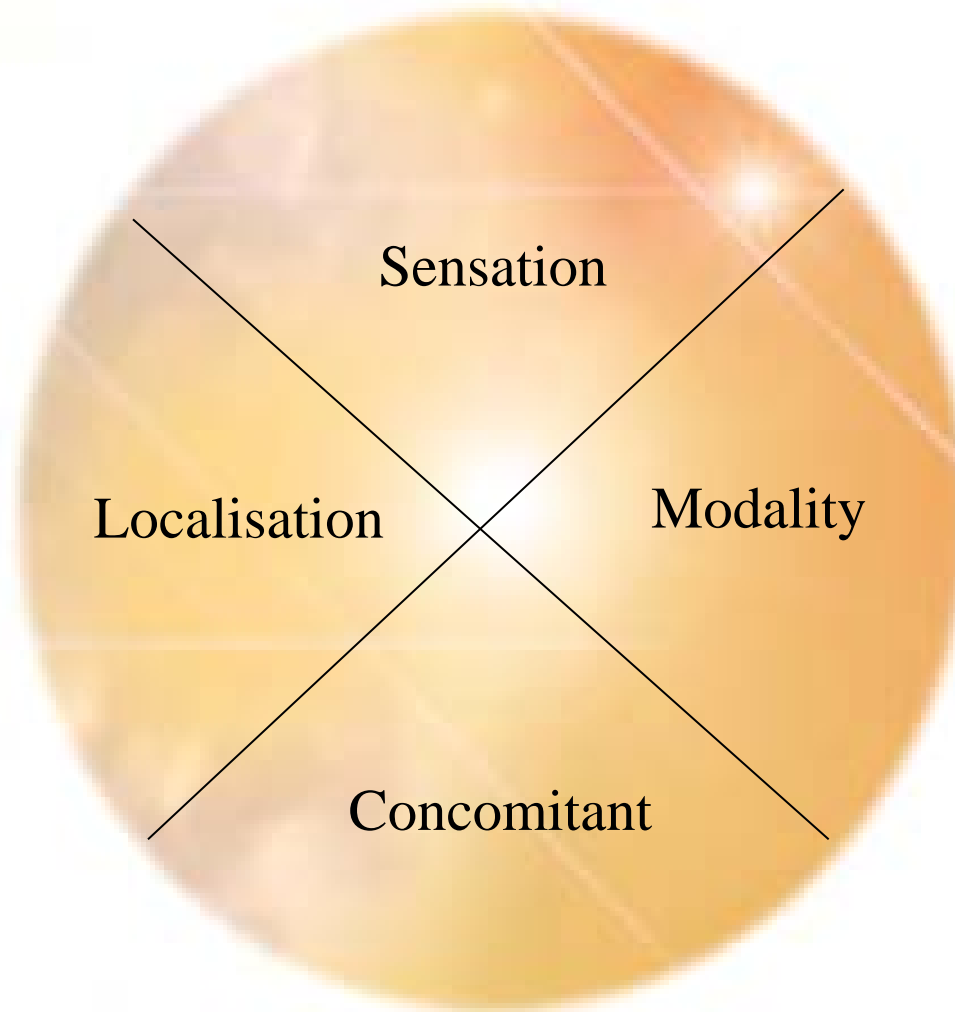
## Case 3 Clear main symptom

Mr. B., 41 years

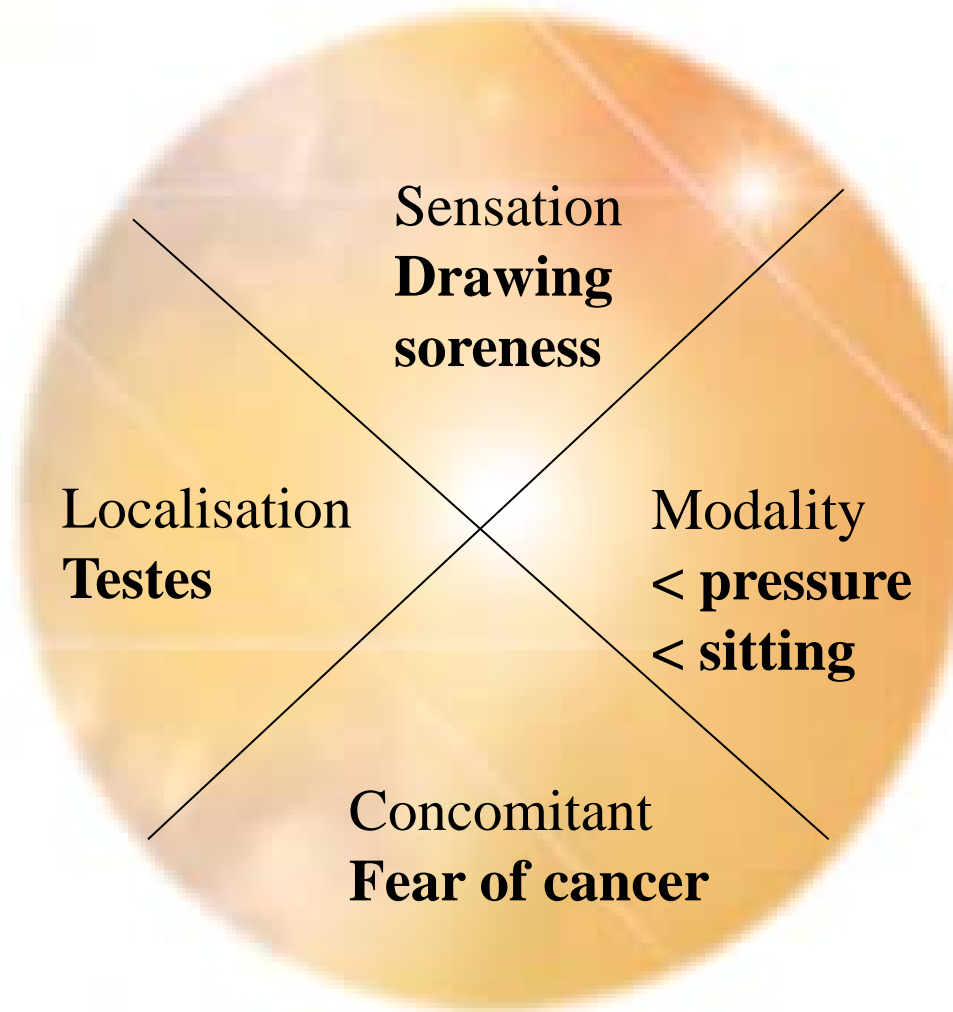
Cancer of the testes

- Tumor of testes, left side
- Drawing pain in the testicle
- Soreness/bruisedness in the testicle
- Pain of the testes < sitting
- Pain of the testes < pressure
- Pain of the testes < full bladder
- Fear of cancer
- Desire for coffee

# Complete symptom





# Complete symptom: Cancer of the testes



## Case 3 Clear main symptom

Mr. B., 41 years

Cancer of the testes

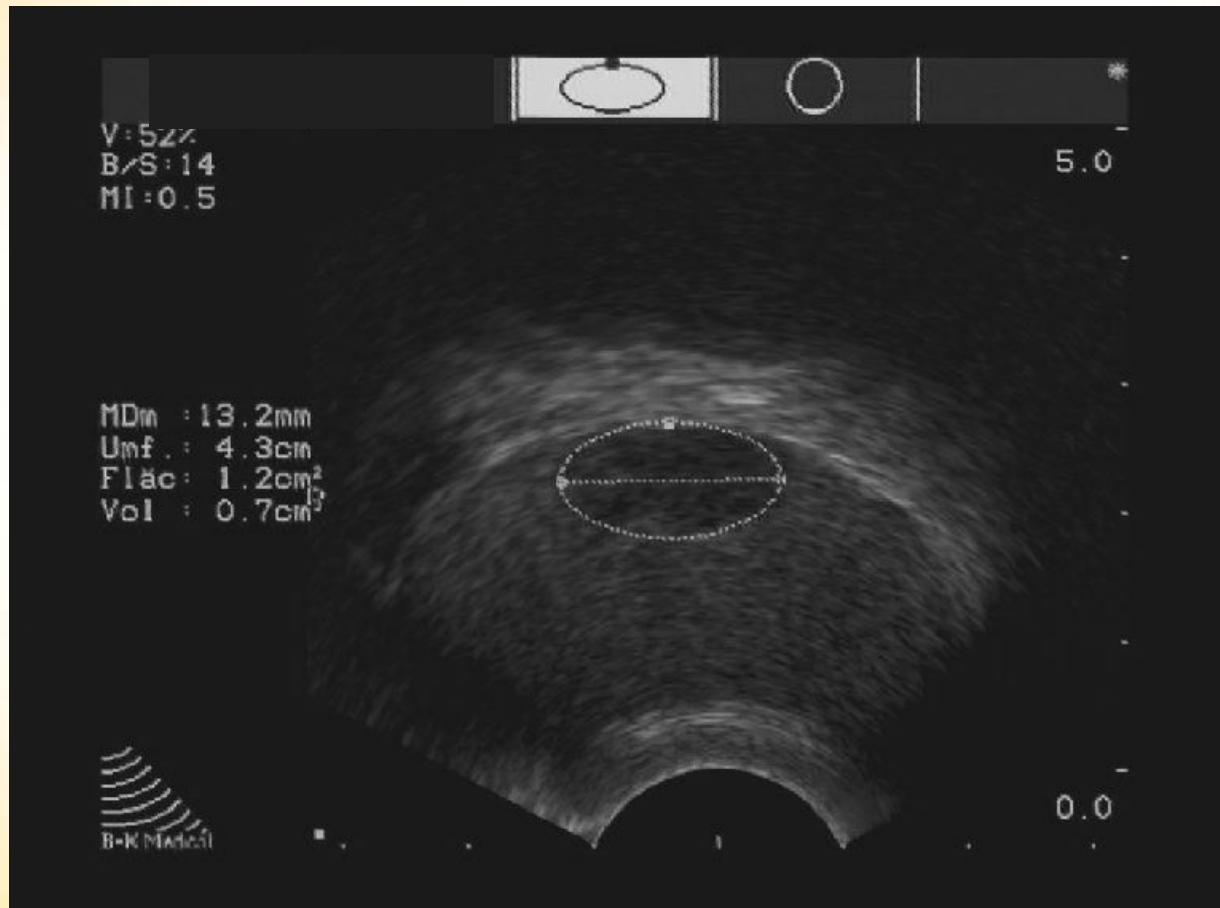
	Lyc. 	Puls.	Sep.	Bry.	Chin.	Calc.	Ars.	Carb-v.	Aur.	Bar-c.	Con. 	Nux-v.
Number of matches	6	6	6	7	7	6	7	7	6	6	6	6
Sum total of grades	22	19	19	16	16	16	15	15	15	15	15	15
Polarity differences	6	3	6	-5	2	-1	3	2	2	6	2	-9
Male genitalia, testes	2	4	2	1	3	2	1	2	4	1	3	4
Drawing in external parts	4	3	3	4	4	3	2	3	1	2	2	3
Sore pain in internal parts	5	3	4	3	3	3	2	2	1	2	1	3
< pressure, external	4	1	3	1	1	3	1	3		4		1
> pressure, external (P)	1	1	2	1	1	2			3		4	2
< sitting	4	4	4	1	2	2	2	1	2	3	4	1
> sitting (P)	1		4	1	2	1	2	2	1	1	1	4
Desire for coffee				3	2		3	1	4		3	
Desire for coffee (P)	2			4	1	3		1				5
Anxiety; fright, easily startled	3	4	3	3	1	3	4	3	3	3	2	3

## Case 3 Clear main symptom

Mr. B., 41 years

Cancer of the testes

12/12/08



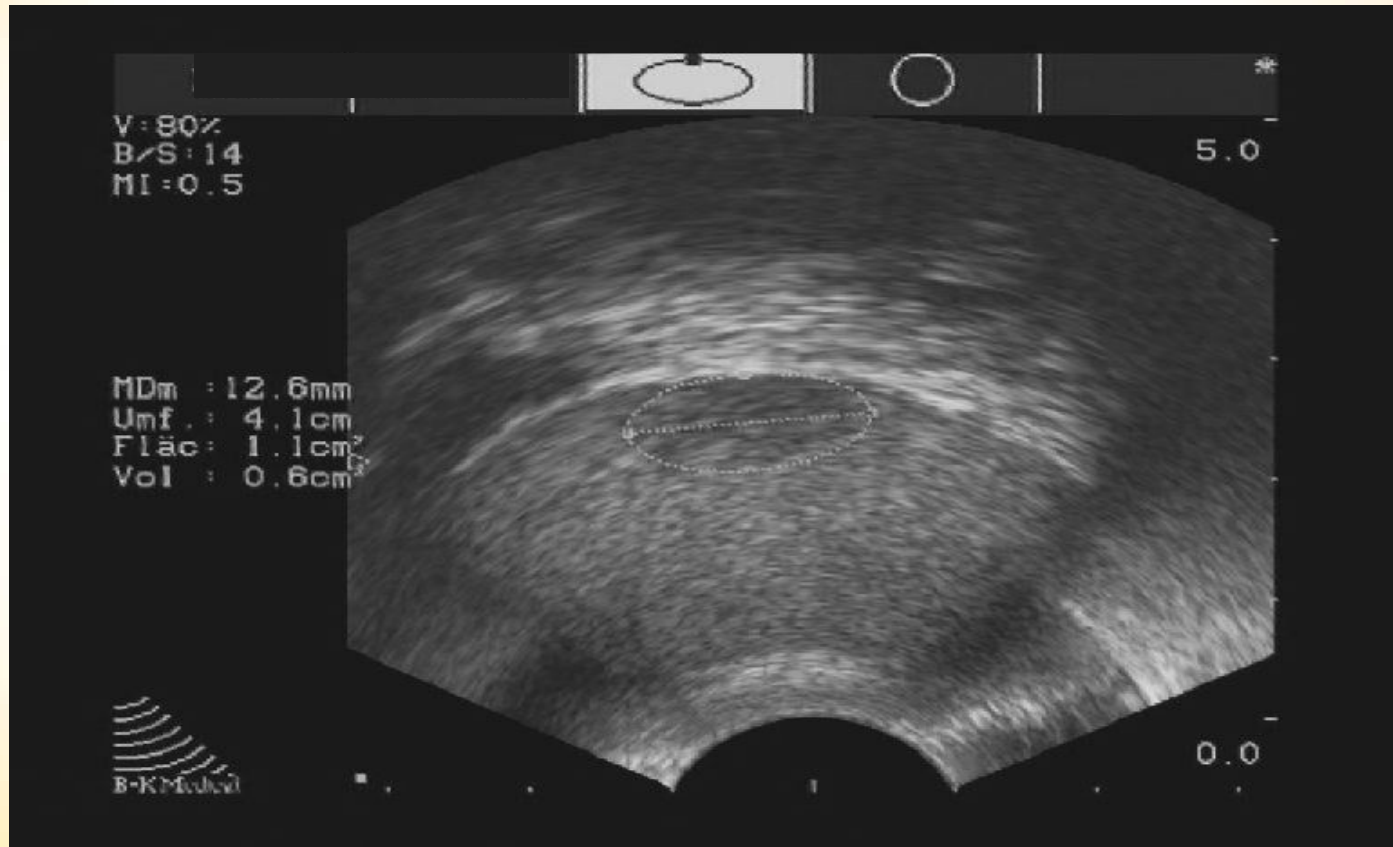


## Case 3 Clear main symptom

Mr. B., 41 years

Cancer of the testes

01/16/09

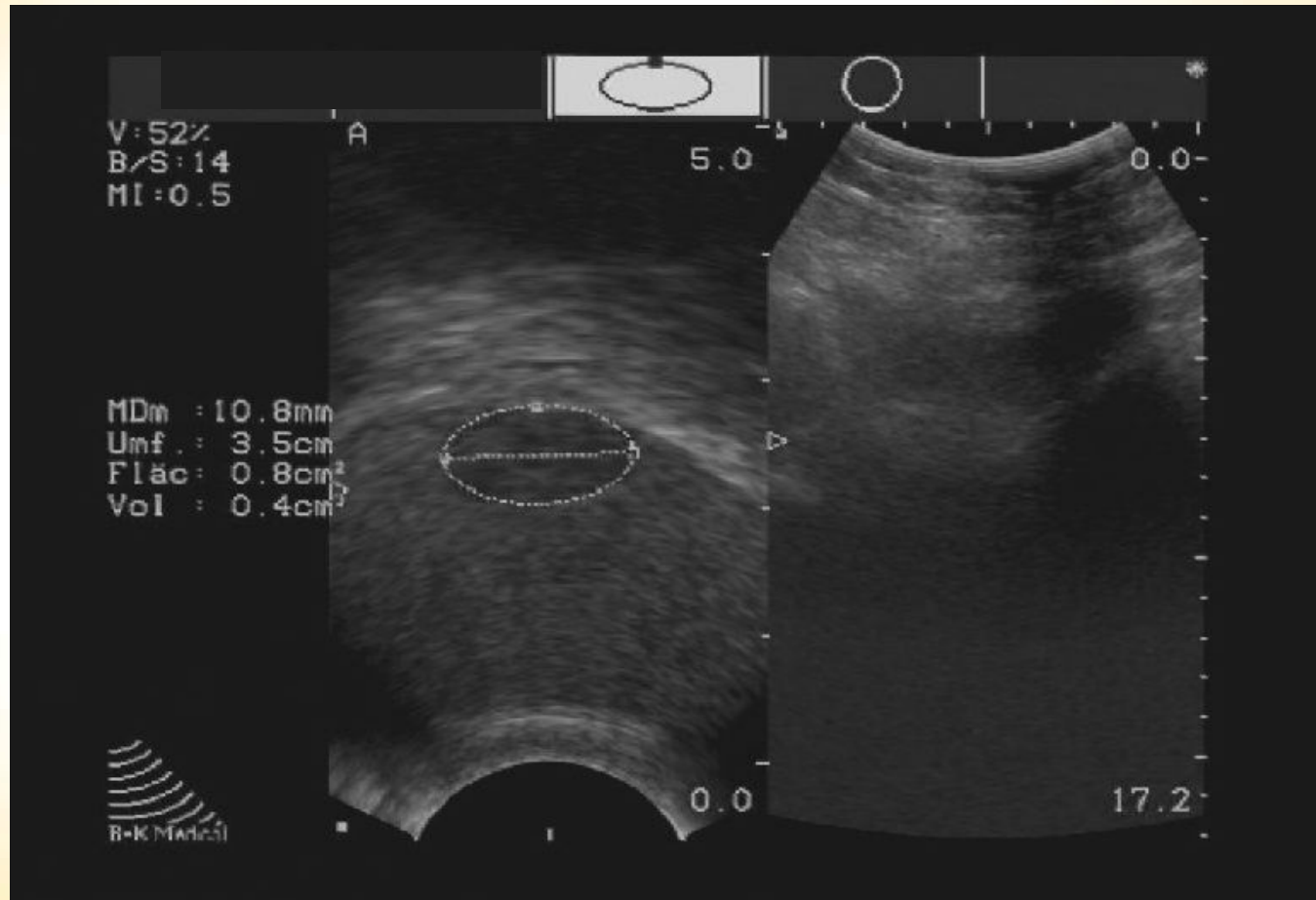


# Case 3 Clear main symptom

Mr. B., 41 years

Cancer of the testes

02/27/09



# Case 3 Clear main symptom

## Mr. B., 41 years Cancer of the testes

RADAR 6.1.40 für Windows

Datei Bearbeiten Suchen Übernehmen Ansicht Optionen Fenster Hilfe

Analyse (1 Ablagen) - Schwer - Hodentumor Klassiker bis 1916 (Kent)

Summe der Symptome (sort.nach Graden) Diese Analyse umfaßt 139 Arzneimittel und 10 Symptome. Intensität wurde berücksichtigt

1. Männliche Genitalien - Schmerz - wund schmerzend - Hoden	1	55
2. Männliche Genitalien - Schmerz - ziehend - Hoden	1	62
3. Männliche Genitalien - Schmerz - ziehend - Hoden - Sitzen, im	1a	2
4. Männliche Genitalien - Schmerz - wund schmerzend - Hoden - Sitzen, im	1a	1
5. Männliche Genitalien - Schmerz - Hoden - Sitzen, im	1a	2
6. Männliche Genitalien - Schmerz - Hoden - erstreckt sich zu - Samenstrang, in den	1	4
7. Männliche Genitalien - Schmerz - Hoden - Kleiderdruck agg.	1	1
8. Männliche Genitalien - Schmerz - Hoden - Berührung, bei	1	10
9. Allgemeines - Speisen und Getränke - Kaffee - Verlangen	1	40
10. Gemüt - Furcht - Krankheit, vor drohender	1	56



	1	2	3	4	5	6	7	8	9	10	11	12	13	14	15	16	17	18	19	20	21	22	23	24	25	26	27	28	29	30	31	32	33	34
	ph-ac.	staph.	puls.	nit-ac.	alum.	nat-m.	zinc.	arg-met.	aur.	clem.	rhod.	phos.	spong.	arg-n.	calc.	cocc.	con.	kali-c.	merc.	nux-v.	thuj.	acon.	ars.	chel.	nat-c.	sulph.	alum-p.	am-c.	tarent.	chin.	ham.	am.	bry.	lec.
	5/6	5/6	4/9	4/7	4/6	4/5	4/5	3/7	3/7	3/7	3/7	3/6	3/6	3/5	3/5	3/5	3/5	3/5	3/5	3/5	3/5	3/4	3/4	3/4	3/4	3/4	3/3	3/3	3/3	2/4	2/4	2/3	2/3	2/3
1.	1	1	3	3	1	2	1	3	2	3	3	2	3	2	2	2	1	1	2	-	2	2	1	1	1	-	1	1	-	2	1	-	-	
2.	1	2	2	1	-	1	2	-	3	2	3	1	-	-	2	2	1	2	2	2	2	1	-	2	2	-	1	-	2	2	-	-		
3.	-	-	-	-	-	-	1	-	-	-	-	-	-	-	-	-	-	-	-	-	-	-	-	-	-	-	-	-	-	-	-	-	-	
4.	-	-	3	-	-	-	-	-	-	-	-	-	-	-	-	-	-	-	-	-	-	-	-	-	-	-	-	-	-	-	-	-	-	
5.	-	-	3	-	-	-	-	-	-	-	1	-	-	-	-	-	-	-	-	-	-	-	-	-	-	-	-	-	-	-	-	-	-	
6.	-	1	-	-	-	-	-	-	-	-	-	-	-	-	-	-	-	-	-	-	-	-	-	-	-	-	-	-	-	-	-	-	-	
7.	-	-	-	-	-	-	-	3	-	-	-	-	-	-	-	-	-	-	-	-	-	-	-	-	-	-	-	-	-	-	-	-	-	
8.	1	1	-	1	1	-	1	-	2	-	-	1	-	-	1	-	-	-	-	-	-	-	-	-	-	-	-	1	-	-	-	-	-	
9.	1	-	1	-	2	1	-	1	2	-	-	-	-	1	1	-	2	-	-	1	-	-	2	1	-	1	-	-	2	-	-	2	1	
10.	2	1	-	2	2	1	-	-	-	-	-	3	2	2	2	-	-	3	1	2	1	1	1	-	1	1	1	1	-	-	2	1	2	

# Boenninghausen: preface

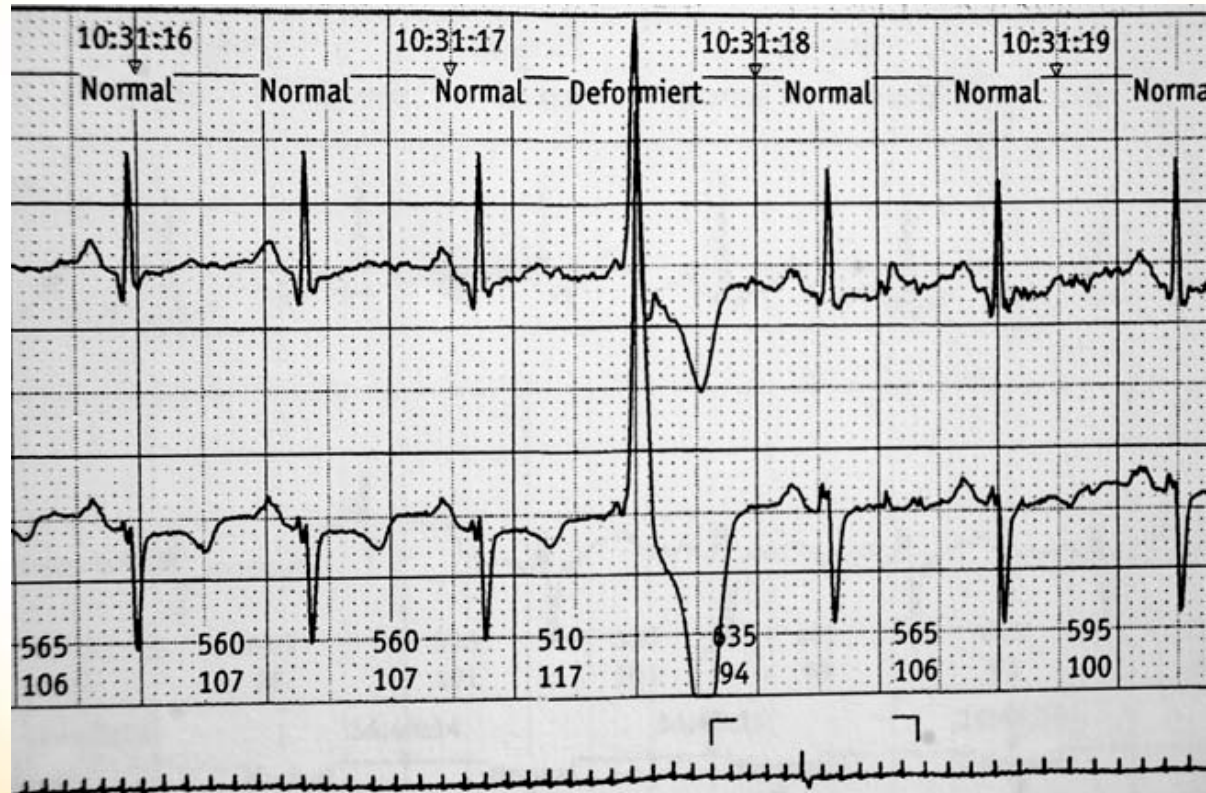
„...By highlighting that which is peculiar and characteristic in a remedy... [I] opened... up a pathway into **the wide field of combination** .... which so far had not been tread before.”

Boenninghausen, PB 1846, preface XIII



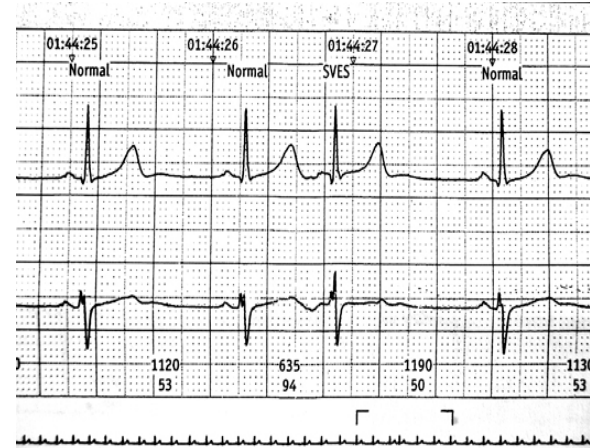
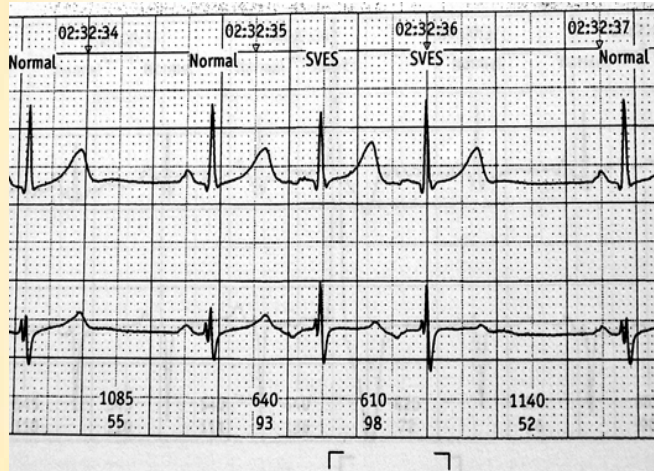
## Case 4 Complicated cases

Mrs. M., 37 years      Cardiac dysrhythmia      June 2009



# Case 4 Complicated cases

Mrs. M., 37 years      Cardiac dysrhythmia      June 2009



## Case 4    Complicated cases

Mrs. M., 37 years

Cardiac dysrhythmia

29/06 - 03/08

- Onset: waking with a fright
- Cardiac dysrhythmia
- Pressure like a wave
- < lying down
- > motion

seit 03/08

- Twisting in the heart
- Stitching in the heart

## Case 4    Complicated cases

Mrs. M., 37 years

Cardiac dysrhythmia

### Symptoms since 29/06

- Early menstruation
- Tiredness, weakness
- Loss of appetite
- Nausea
- Vertigo > walking

### Symptoms in the last 12 months


- Unrefreshing sleep



# Case 4    Complicated cases

Mrs. M., 37 years

Cardiac dysrhythmia

	Sep.	Rhus.	Plat. 	Ign.	Cham.	Sil.	Sulf.	Calc.	Nat-m.	Acon.
<b>Number of matches</b>	9	8	8	8	8	8	8	8	8	8
<b>Sum total of grades</b>	21	24	22	21	20	20	19	18	18	17
<b>Polarity differences</b>	3	9	9	3	7	1	-2	-1	-7	-2
<b>Heart and heart region</b>	3	3	2	1	2	1	4	4	4	3
<b>Wave-like pain</b>	1		1							1
<b>&gt; motion, during</b>	3	4	3	1	2	1	1	1	1	1
<b>&lt; motion, during (P)</b>	1	1	1	1	1	1	2	2	3	1
<b>&lt; lying</b>	3	4	4	2	4	4	2	1	1	1
<b>&gt; lying (P)</b>	1	1		1	1	1	1	3	3	1
<b>Turning (twisting)</b>	1	3	3	3	2	4	2	1	2	
<b>Stitching internal parts</b>	4	3	1	4	2	2	3	3	2	3
<b>&lt; mind, fright, anxiety</b>	1	1	5	4	2	3	1	1	4	4
<b>Menstruation, early</b>	3	4	3	3	4	2	2	4	1	1
<b>Menstruation, late (P)</b>	4	1		1	1	4	4	2	4	3
<b>Sleep, unrefreshing</b>	2	2		3	2	3	4	3	3	3

# Platinum - Chronic Diseases

- Oppression of breathing with a **warm rising sensation**, from the heart up into the pit of the throat
- Cramp-like pain in the left side [of the chest], **gently increasing and decreasing**.
- **Stitches**, frightening, in the left side.

Symptomenkodex, G.H.G. Jahr, German edition, p. 379



*Bönninghausens  
Therapeutisches Taschenbuch*

# Four ways of applying Boenninghausen's method

- Case 1      Clear modalities and sensations
- Case 2      Uncharacteristic symptoms
- Case 3      Clear main symptom
- Case 4      Complicated case

# **WELCOME to LIGA 2010**

## **WORLD HOMEOPATHIC CONGRESS**

**MAY 18-22. 2010**  
**REDONDO BEACH**  
**CALIFORNIA**



**The Boenninghausen Method - Secure Remedy Choice in Severe Diseases**

**Dr. med. Carl Rudolf Klinkenberg Germany**